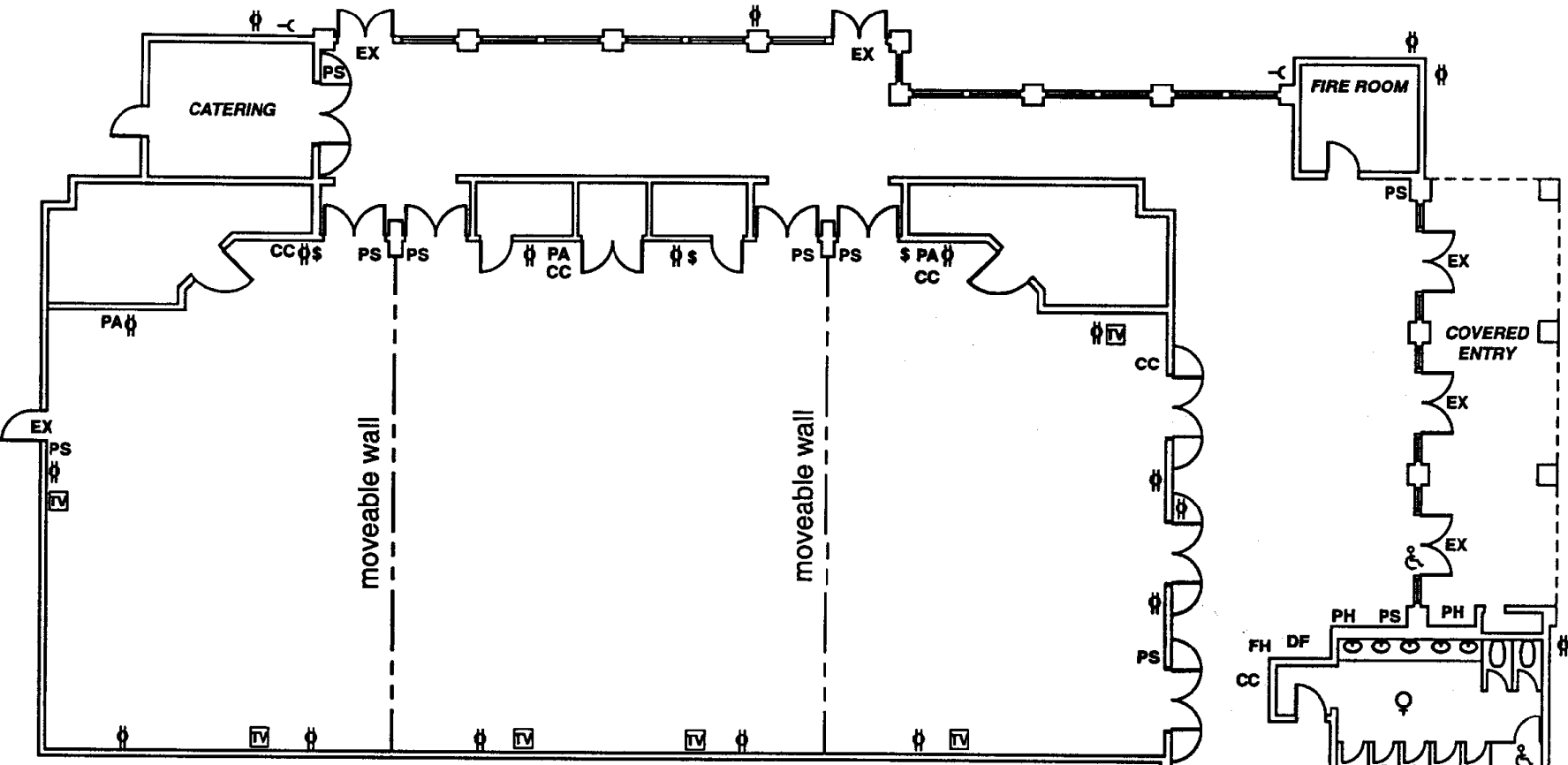


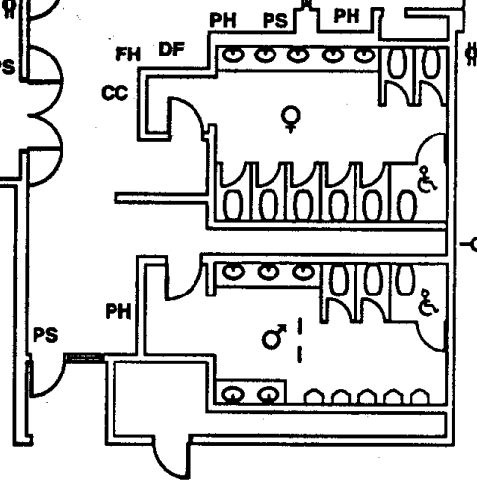
# CASCADE HALL



## SYMBOLS

- |                           |                             |
|---------------------------|-----------------------------|
| ♿ HANDICAPPED ACCESS      | FH FIRE EXTINGUISHER / HOSE |
| ♂ MEN'S REST ROOMS        | DF DRINKING FOUNTAIN        |
| ♀ WOMEN'S REST ROOMS      | PH PUBLIC PAY PHONE         |
| ⚡ DUPLEX OUTLET           | PS FIRE ALARM PULL STATION  |
| CC CLIMATE CONTROL OUTLET | EX EMERGENCY EXIT           |
| PA PA SYSTEM CONTROL BOX  | ⌞ HOSE BIBB                 |
| TV TELEVISION OUTLET      | ⌚ LIGHT SWITCH              |

109' x 50'  
 5,450 sq. ft.  
 Ceiling Height of 12'  
 Fluorescent lighting  
 PA system  
 Capacity of 300-500 people  
 120/208 Volts  
 Additional power  
 available upon request  
 Climate Control



Drawn by Peter L. Brown

